

Maroochydore

Section 7

What the community told us

In general, for Aerodrome Road and Sunshine Plaza the community supported:

- not widening Aerodrome Road
- minimising impacts on parking
- minimising impacts on local businesses and property
- minimising noise impacts from the existing roadway
- express buses and through traffic to use the Sunshine Motorway
- maximising pedestrian safety and access
- efficient shuttle/feeder services that connect with major activity areas
- improvements to the Sunshine Plaza bus station
- good integration with the proposed future rail station at Maroochydore
- alternative mode choice such as monorail or light rail.

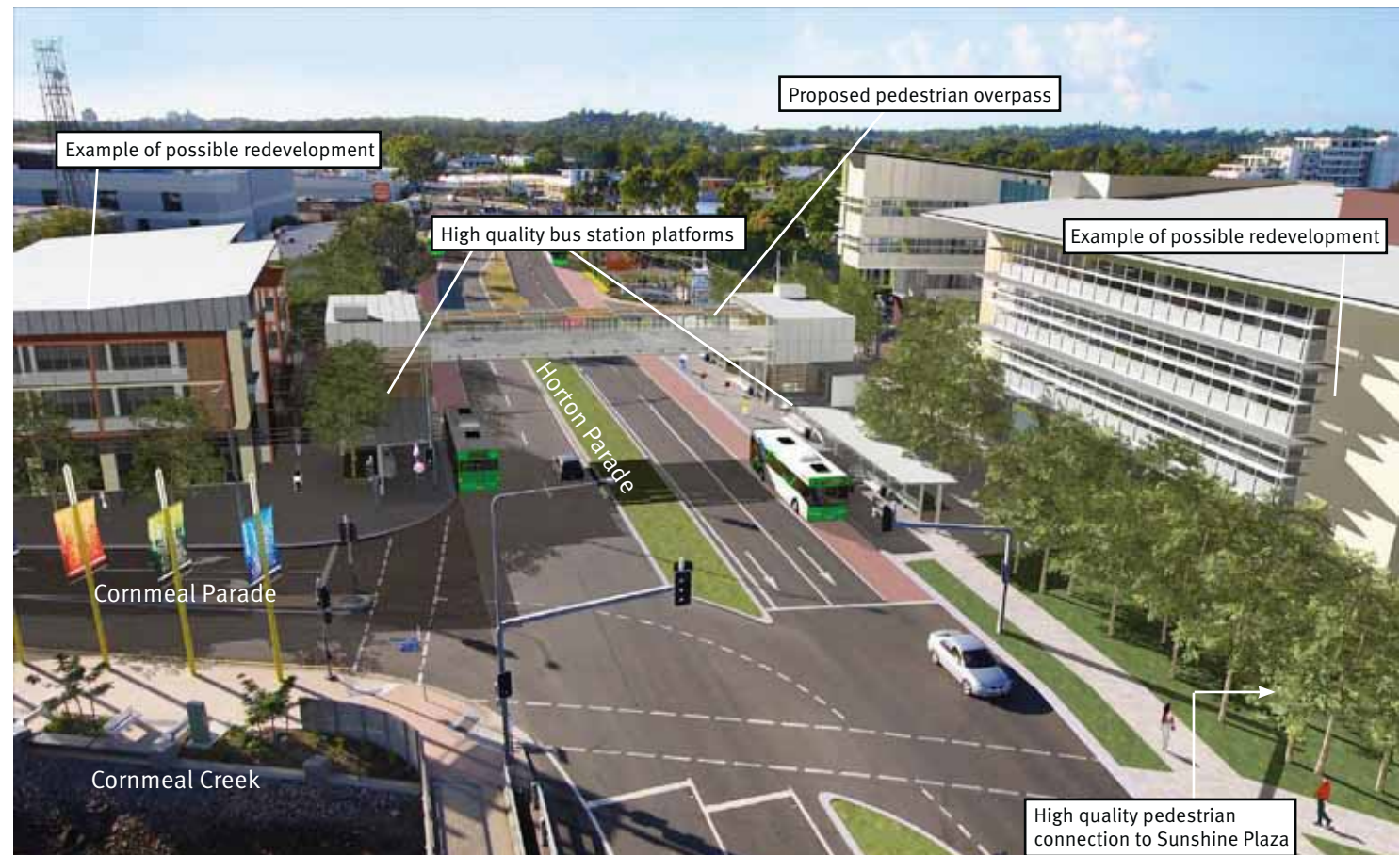


Figure 5 - Artist impression of Maroochydore bus station (looking south towards Alex Beach)

Changes made

In the revised plans, the department:

- has limited parking and property impacts along Aerodrome Road. Some impacts on parking and property would still be required between Sunshine Plaza and Third Avenue and at Sixth Avenue where bus priority is necessary. However, as this area redevelops, the department will recommend that property progressively be set back to accommodate potential future transport needs
- proposes pedestrian signals between Fifth Avenue and Wrigley Street
- proposes pedestrian signals and traffic lights to assist with Rose Street crossing
- removed some bus indents and replaced them with on-street bus stops
- moved the alignment to affect fewer properties
- has adopted station option 2 (on Horton Parade near Cornmeal Creek with good access to both Sunshine Plaza and Ocean Street) as the preferred station option.

Local features

Bus queue jumps to replace dedicated bus lanes

Based on community feedback and the results of technical studies, we have significantly revised our draft plans for Aerodrome Road. Bus lanes are now only proposed between Sunshine Plaza and around Third Avenue. This is one of the most congested sections of the coast's road network and needs a bus priority solution before the traffic congestion significantly worsens and buses are unable to reliably access the Maroochydore station.

South of Third Avenue, short sections of bus priority lanes are proposed for either side of Sixth Avenue.

This will get local buses to the front of the queue and give them the first green light at major intersections. While this solution does not provide the same level of benefits as dedicated bus/transit lanes, this low-impact solution is a balanced outcome that will provide sufficient improvements for local and tourist bus trips and work with the local amenity.

The Department of Transport and Main Roads believes this solution strikes the right balance between minimising local impacts and providing the benefits of improved public transport priority. Express services between Caloundra and Maroochydore will continue to use the Sunshine Motorway.

Parking

There are approximately 210 on-street car parks in this section. Under the revised concept designs, approximately 130 car parks may be impacted. However, the department is investigating opportunities to provide between 40 and 50 replacement off-street car parks between Rose Street and Second Avenue. The department has reduced the number of parking impacts from the original draft plans, where approximately 200 car parks were potentially impacted.

The department will also support the Sunshine Coast Regional Council to provide local consolidated parking at or near several 'village nodes' along Aerodrome Road as it develops.

De-maining

During consultation in September and October 2008, some community members requested that Aerodrome Road be 'de-mained', turned into a slow speed environment and managed by the Sunshine Coast Regional Council. This has implications on the greater transport network and the ownership and management of the road.

The Sunshine Coast Regional Council has been advised and is considering this feedback.

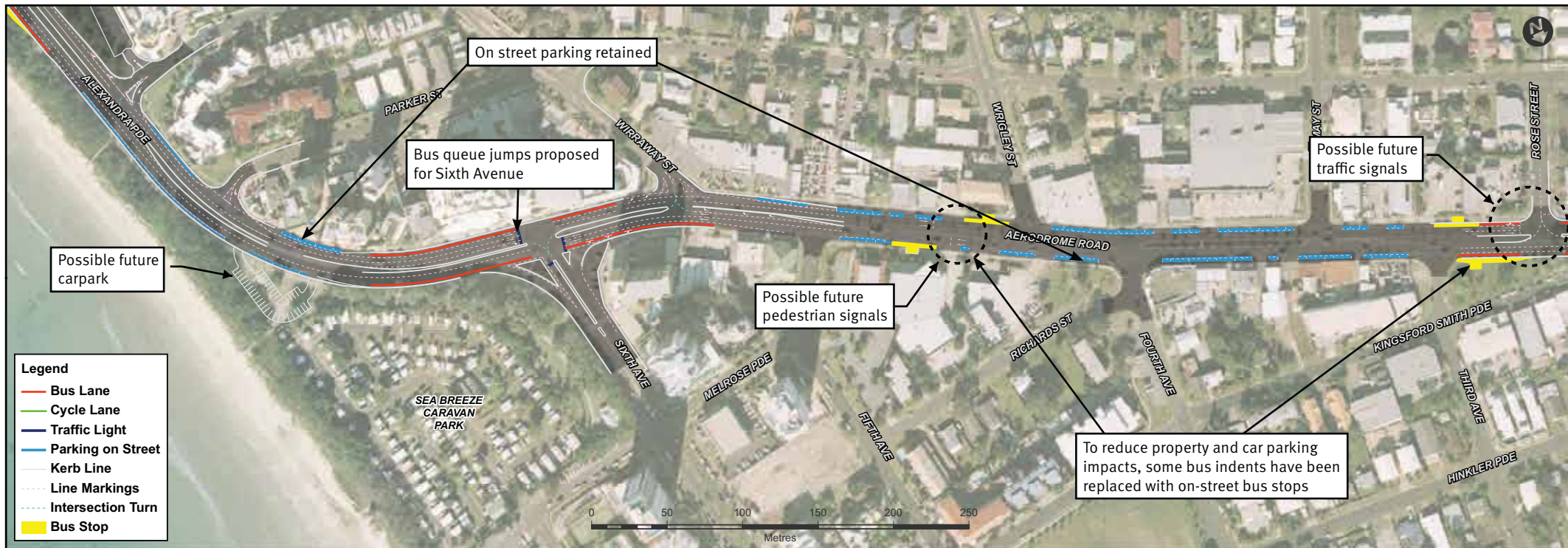
The changes along Aerodrome Road are being explored in consultation with the Sunshine Coast Regional Council and are subject to ongoing stakeholder review and community consultation.

Maroochydore Master Plan

The project team has been working closely with the Sunshine Coast Regional Council to ensure that CoastConnect — Caloundra to Maroochydore integrates with the proposed Maroochydore Master Plan. This means working together to ensure that opportunities are preserved for possible future road network improvements. Discussions between the Sunshine Coast Regional Council and the Department of Transport and Main Roads are ongoing to make sure that public transport is well integrated into the town centre.

Maroochydore

Revised Concept Designs



“we are investigating options for local consolidated parking with the Sunshine Coast Regional Council”

